

Sub Plan #7

Artist's Choice

CLASS SET -
Please don't write on this!

DIRECTIONS:

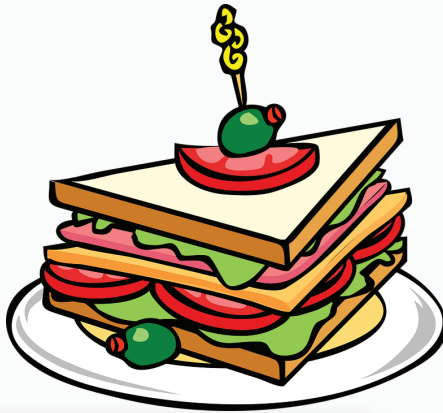
Choose one of the ideas below and make a neat, detailed drawing. Take your time, go slow, and edit - this is not a race. If you finish early, you are expected to choose a different option and work on it on a separate sheet of paper. Make sure write your name and class period on the back of the drawing.

CRITERIA FOR SUCCESS (20 points)

- Artwork is creative and original
- Artwork is done in pencil fills the entire paper thoughtfully
- Artwork is either shaded with pencil or colored using provided supplies
- Artwork shows evidence of an entire class period of quality work.
- CRAFTSMANSHIP (neatness and precision)

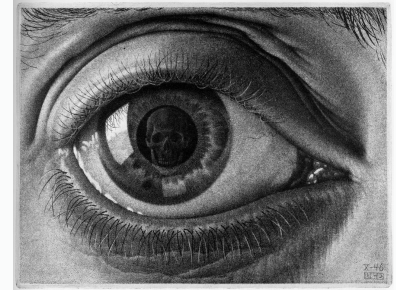
MMMMM . . .

Draw something on a plate. Is it delicious or repulsive? Don't forget the fork!



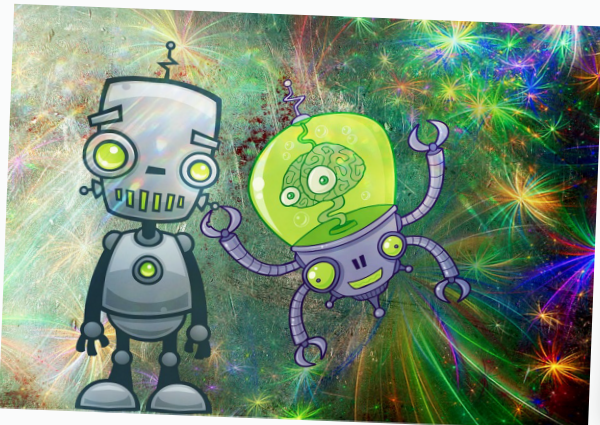
EYE REFLECTION

Draw an eye in as much detail as possible. Then draw something reflected in the eye. Use the Eye Guide on the back to help you.



ALIEN LAND

You are on a spaceship that just landed on an unexplored planet. What do you see when you step out? Do the aliens have 4 eyes? Or chicken feathers? Is the ground made up of Swiss cheese? Let your imagination run wild!



DRAW A WORD - LITERALLY!

Choose a word and draw it ... making the letters out of what it is! Ex: "Ice" made up out of ice cubes. "Running" made out of people running, etc. Make the word fill your paper and take your time!



GUIDE TO DRAWING EYES:



1. Start out with a circle. Think of this as your entire eyeball. By starting this way, your eye will look more realistic.



2. Circle within a circle



3. Circle within that circle



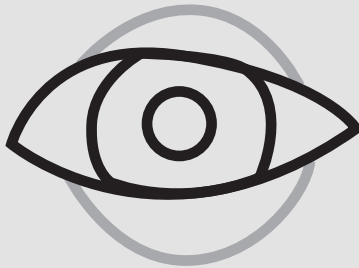
4. Top of eye shape. Notice how it is not symmetrical.



5. Bottom of eye shape. Notice how the right side is thinner than the left.



6. Erase unwanted lines.



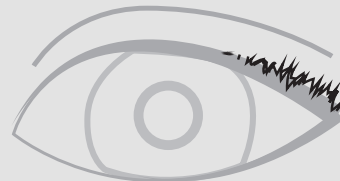
7. Add arch above eye. Notice how it is lower on the left.



8. Erase unwanted lines.



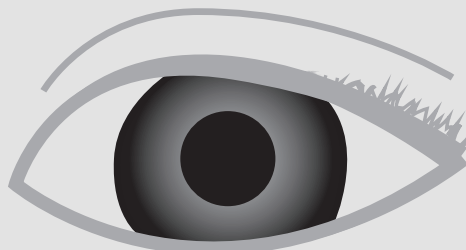
6. To create eyelashes, simply darken the right edges of the eye. If you are creating a male eye, I recommend skipping the next step.



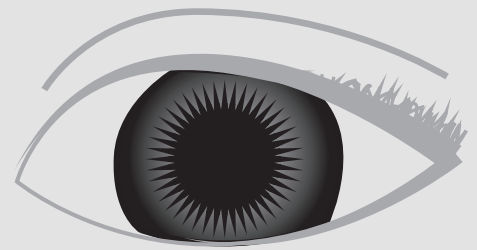
7. If you want to create individual eyelashes (optional), do not draw every single one. Draw a cluster at the edge of the eye.



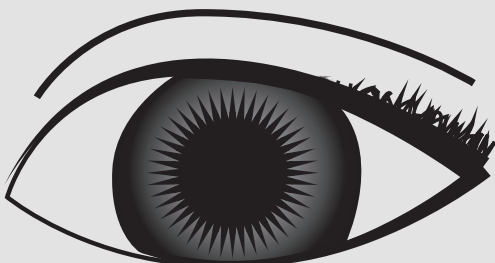
8. Shade the pupil as dark as possible



9. Shade the iris darker on the outside.



10. Add small lines on the outside of the pupil.



11. Last, erase a small spot in the eye to show a light reflection.

